



GAT MONTHLY MEMBERSHIP PROGRESS REPORT

Results as of: 3/31/2024

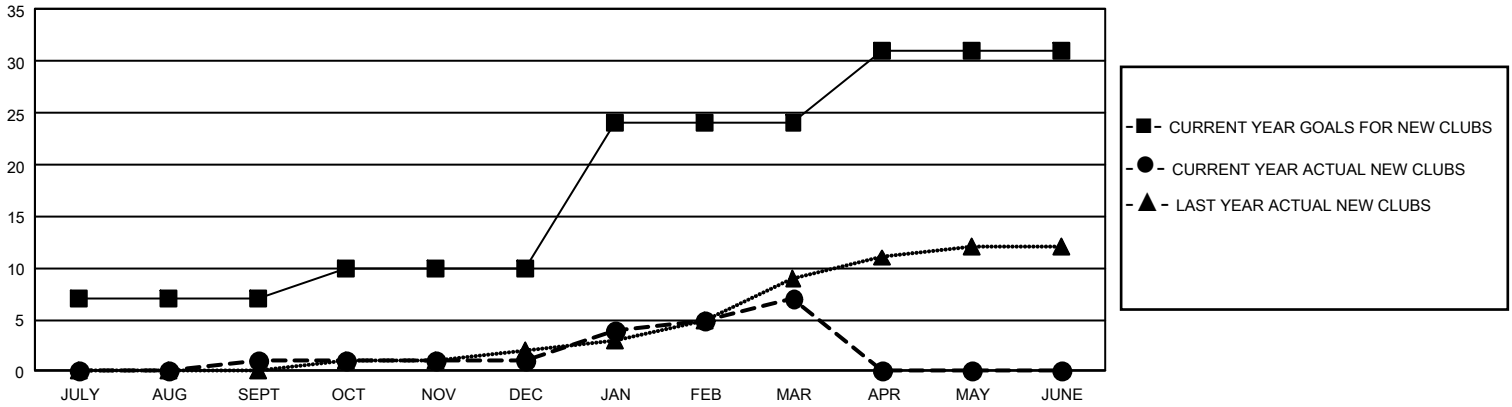
GMT Constitutional Area 5 - J, Group G

REPORT DOES NOT INCLUDE CLUBS IN UNDISTRICTED AREAS.

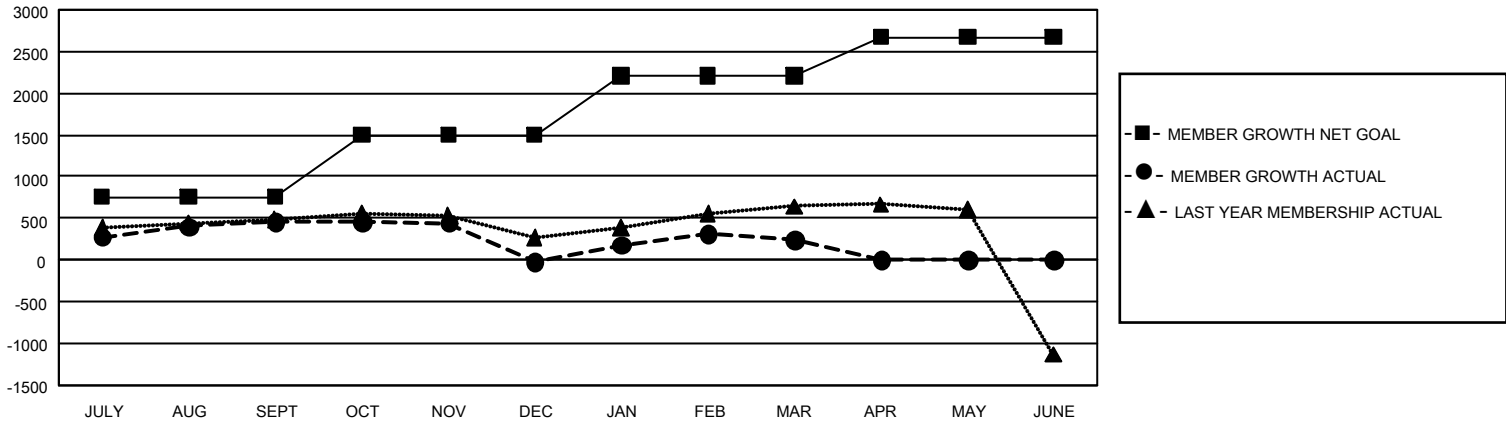
Clubs			
RESULTS FOR 2023-2024			
QUARTER	NEW CLUB GOAL	NEW CLUBS	DROPPED CLUBS
JULY/AUG/SEPT	21	1	0
OCT/NOV/DEC	9	0	4
JAN/FEB/MAR	42	6	2
APR/MAY/JUNE	21	0	0

Members			
RESULTS FOR 2023-2024			
QUARTER	MEMBER GROWTH NET GOAL	MEMBER GROWTH ACTUAL	DROPPED MEMBERS ACTUAL (including transfers)
JULY/AUG/SEPT	758	1,169	661
OCT/NOV/DEC	743	474	920
JAN/FEB/MAR	712	890	617
APR/MAY/JUNE	462	0	0

GOALS AND ACTUAL NEW CLUBS CUMULATIVE



GOALS AND ACTUAL MEMBERS CUMULATIVE



DROPPED CLUBS: 6	770 CLUBS OF 1,261 ADDED 1 OR MORE NEW MEMBERS	<u>GENDER DISTRIBUTION</u>	
		MALE 30,129 (76.69%) FEMALE 9,156 (23.31%) NON BINARY 0 (0.00%) PREFER NOT TO ANSWER 2 (0.01%)	
<u>DROPPED MEMBERS</u>		CLICK HERE FOR CUMULATIVE MEMBERSHIP DATA	TOTAL FAMILY UNIT MEMBERS 12,229
DECEASED 270 CLUB CANCELLED 0 OTHER 1,928 TOTAL 2,198	FAMILY MEMBERS PAYING HALF DUES 6,906		